

# Physical Security, Elevated

As threats accelerate, security teams often struggle to keep pace, hindered by too many tools and disconnected systems.

To respond faster, they need a consolidated view into what matters most.

## Existing Challenges

- Too many consoles and alerts
- Limited situational awareness
- Reactive or manual response

**Dataminr and Genetec partner to create a centralized security operating environment that merges digital intelligence with the security response today's organizations need.**

By integrating Dataminr's AI-powered signals inside Genetec's physical security platform, operators get a single place to visualize, manage, and respond to events. This pairing eliminates the need for "chair swivel" to correlate siloed information within operational workflows, offering a single source to monitor external risk and internal security controls.

## INTELLIGENT SECURITY

### Proactive Threat Awareness, Coordinated Security Response

Together, Dataminr and Genetec empower organizations to proactively address threats with speed and confidence. Dataminr's leading AI capabilities surface risks from over one million public data sources worldwide—minutes to hours before traditional sources—while Genetec's unified physical security platform enables teams to turn those insights into immediate, coordinated action.



#### AI-driven signals

Identify emerging risks and provides real-time intelligence for improved decision-making during high-impact events and emerging threats.



#### Proven physical security

Combines video surveillance, access control, automatic license plate recognition (ALPR), communications, and intrusion detection for incident management and response.



#### 360-Degree Visibility

Stay ahead of risks and safety events with the earliest possible warning of incidents



#### Integrated Management

Reduce alert fatigue with context, correlation, and single-pane-of-glass management



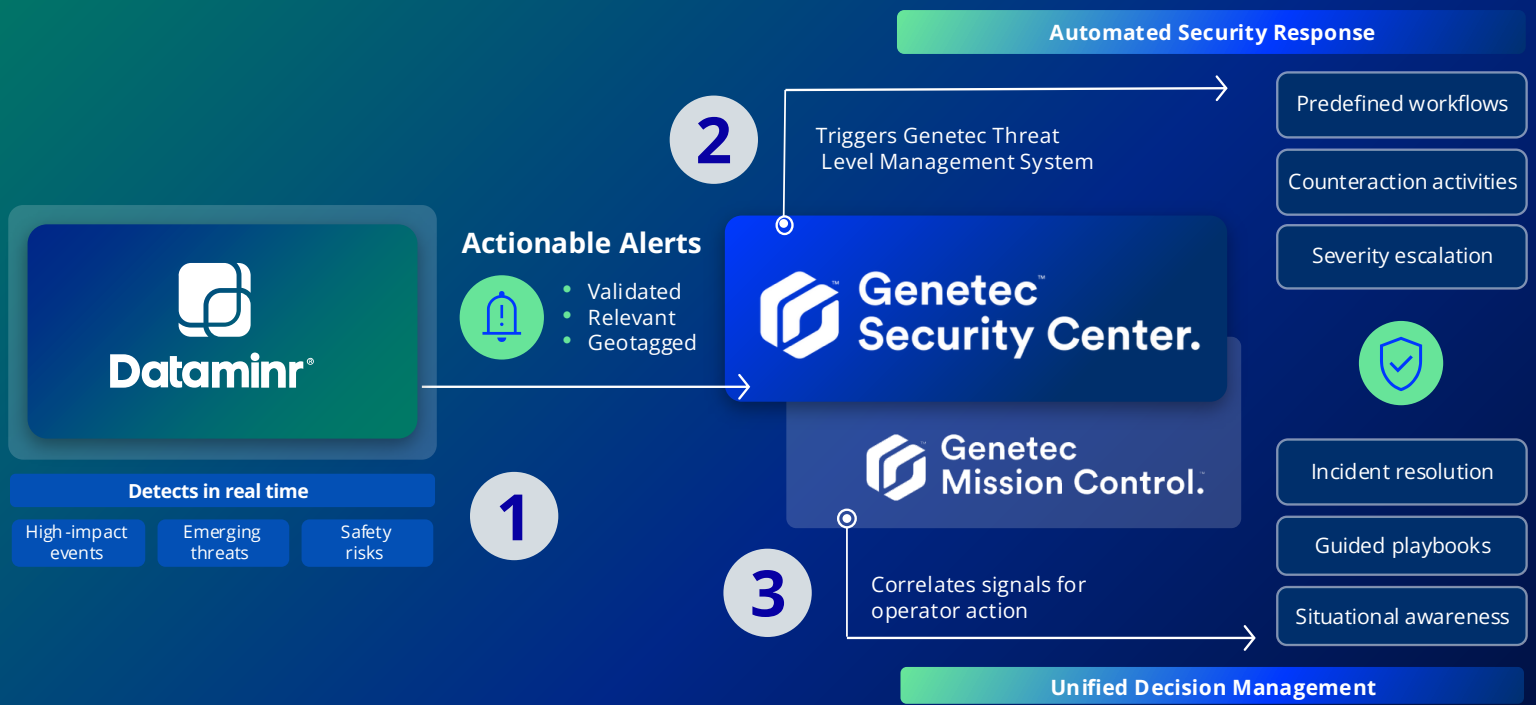
#### Contextual Intelligence

Understand impacts and dependencies immediately for improved decision-making



#### Accelerated Response

Automate responses that protect people, facilities, and operations



### 1. AI alerts

Dataminr AI continuously analyzes data on emerging events, risks, and public safety threats.

### 2. Automated action

Dataminr real-time signals trigger Genetec's threat level management system for automatic response

### 3. Decision management

Operators consume Dataminr insights within the Genetec platform for incident lifecycle management.

## Improve Your Security Outcomes



### Site security situational awareness

Provide security teams with early warning of risks near facilities, enabling proactive response before incidents reach their perimeter.



### Multi-facility protection

Centralize risk monitoring and security response across multiple locations through unified information and standardized automated workflows.



### Critical infrastructure and event security

Enhance protection of high-value assets with AI-powered detection of external risks and events with automated security escalation protocols.



### Business continuity during emergencies

Maintain resilience during an emergency or natural disaster through early detection that triggers evacuation procedures and safety protocols.

**Experience the Dataminr and Genetec difference.**

Learn more at [dataminr.com/partners/technology-alliance/genetec](https://dataminr.com/partners/technology-alliance/genetec).

